

GE Healthcare

LOGIQ™ P7

Make it easy. Make it your own.



When we asked ultrasound users like you to describe the ideal general imaging system, they had three words for us. **Make it easy.**

You asked for simplicity. We delivered.

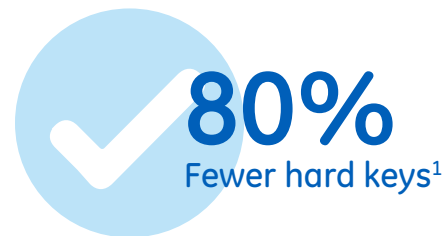
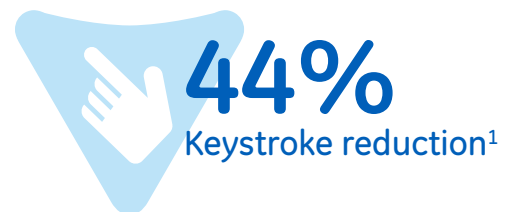
The LOGIQ™ P7 is easy to use and enables fast exams through customizable user workflow and productivity tools. It's the choice for a **Personalized**, **Patient-centric** and **Practical** ultrasound system.

Make it easy

Make it easy to operate the system. To acquire diagnostic images. To access features and applications. To take on a busy schedule. To receive support. And, make it easy to afford.

Introducing the LOGIQ P7 ultrasound system from GE Healthcare – a general imaging system designed for quick diagnostic exploration and full schedules.

Whether the need is immediate triage or a comprehensive exam, you can rely on the budget friendly LOGIQ P7 system to provide the consistent image quality, comprehensive application coverage, and ease of use that enable clinicians to make timely, confident decisions.



Innovative My Page provides simplified user controls:

- Personalize to user preference
- Large 10.4 inch touchpanel

Personalized...to help you customize your workflow

The key to the system's simplicity is intuitive console controls and a personalized digital user interface called My Page. This innovative GE Healthcare feature enables you to customize workflow preferences and populate the large touch screen with use case presets you designate including:

- Measurements
- Body patterns
- Comments
- Functions

With My Page, there are no extra controls to slow you down. Simply log in, select the appropriate exam type, and you are ready to begin scanning. Additional user defined keys help you quickly access most often used features. Easy to learn and use, the LOGIQ P7 supports high efficiency for busy schedules.

Patient-centric...to help you provide excellent patient care

The LOGIQ P7 supports your diagnostic confidence across a wide range of patient exams.

Provide high quality diagnosis

- Excellent image quality with minimal tweaking required
- Superb B-Mode spatial and contrast resolution

Address various clinical needs

- Wide selection of high quality probes for excellent exam coverage including abdominal, small parts, vascular, cardiac, musculoskeletal and OB/GYN imaging

Apply advanced imaging tools

- Utilize advanced imaging tools when you need them including B-Flow™, 3D/4D, Elastography, Stress Echo and TVI/TVD

Practical...a smart choice for usability and investment value

The LOGIQ P7 system easily adjusts to your working style, preferences and variable needs throughout your workday.

Designed for user comfort and easy workflow

- Large 21.5 inch monitor and accessible 10.4 inch touchscreen
- Simple operating panel design with fewer physical keys¹
- Fully articulating arm³
- Compact, lightweight design to accommodate small spaces and offers enhanced mobility including wireless LAN and Power Assistant battery operation
- Digital TGC and digital keyboard²
- Windows® 7 operating system with 64 bit computing

Increase exam speed and efficiency

- Automated tools help provide fast exams including Auto Image Optimization, Auto IMT, AutoEF, Measure Assistant, Compare Assistant and Scan Assistant

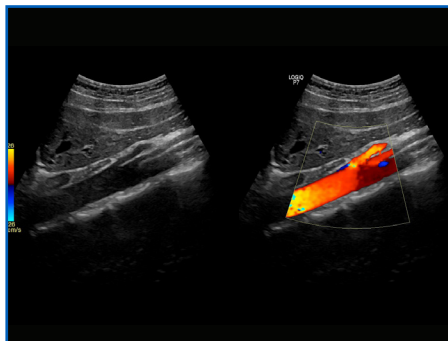
Easy access to support

- My Trainer, on-board training modules, help accelerate operational confidence
- LOGIQ Club website offers educational resources to help optimize system utilization
- Purchasable service agreement options³ including remote service capabilities such as remote 'system diagnostics' and 'software downloads' support equipment uptime

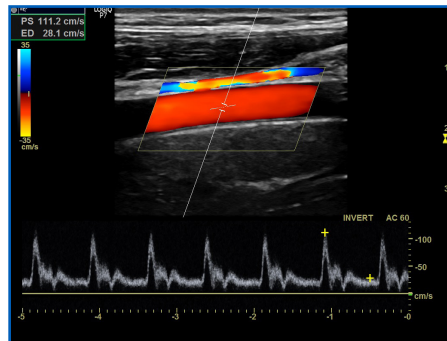
Please refer to the back page for a list of purchasable options.



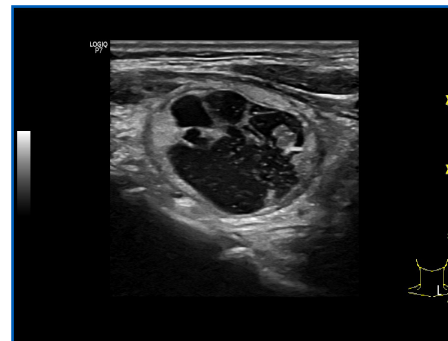
Patient-centric Imaging



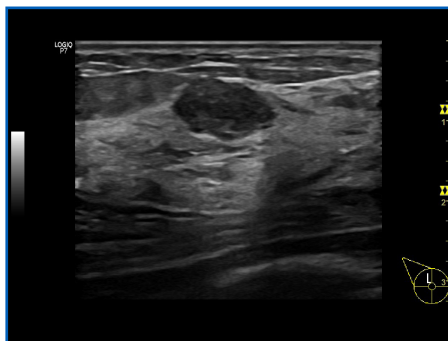
Dual image of the aorta with 4C-RS probe



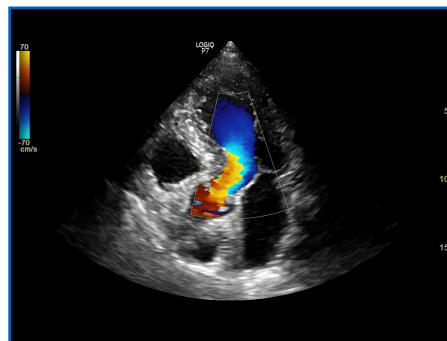
Common carotid artery using L6-12-RS probe



Detailed thyroid imaging with L6-12-RS probe



Definition of breast lesion using L6-12-RS probe



Apical 4-chamber view of the heart with 3Sc-RS probe



Rendered fetal face using RAB2-6-RS probe to help enhance clinical confidence

www.gehealthcare.com

GE Healthcare provides transformational medical technologies and services that are shaping a new age of patient care.

Our broad expertise in medical imaging and information technologies, medical diagnostics, patient monitoring systems, drug discovery, biopharmaceutical manufacturing technologies, performance improvement and performance solutions services help our customers to deliver better care to more people around the world at a lower cost.

In addition, we partner with healthcare leaders, striving to leverage the global policy change necessary to implement a successful shift to sustainable healthcare systems.

¹ Internal GE engineering study using standardized protocols for an abdominal exam compared with prior version GE LOGIQ P6 ultrasound system.

² Optional physical keyboard.

³ Availability varies; please contact your GE Healthcare Representative for more information.

B-Flow, Advanced 3D/4D, Elastography, Stress Echo, TVI/TVD, Auto IMT, AutoEF, Measure Assistant, Compare Assistant and Scan Assistant are all purchasable options.

© 2015 General Electric Company – All rights reserved.

General Electric Company reserves the right to make changes in specifications and features shown herein, or discontinue the product described at any time without notice or obligation. Contact your GE Representative for the most current information.

GE, GE monogram, LOGIQ, and B-Flow are trademarks of General Electric Company.

Windows is a registered trademark of Microsoft Corporation. Third party trademarks are the property of their respective owners.

GE Medical Systems Ultrasound & Primary Care Diagnostics, LLC, a General Electric company, doing business as GE Healthcare.

GE Healthcare
9900 Innovation Drive
Wauwatosa, WI 53226
U.S.A.
www.gehealthcare.com

Global
January 2015
JB26899XE